



# MONTHLY MEMBERSHIP PROGRESS REPORT

District 325B2

Results as of: 06/30/2019

GMT: KHAGENDRA SITLAULA

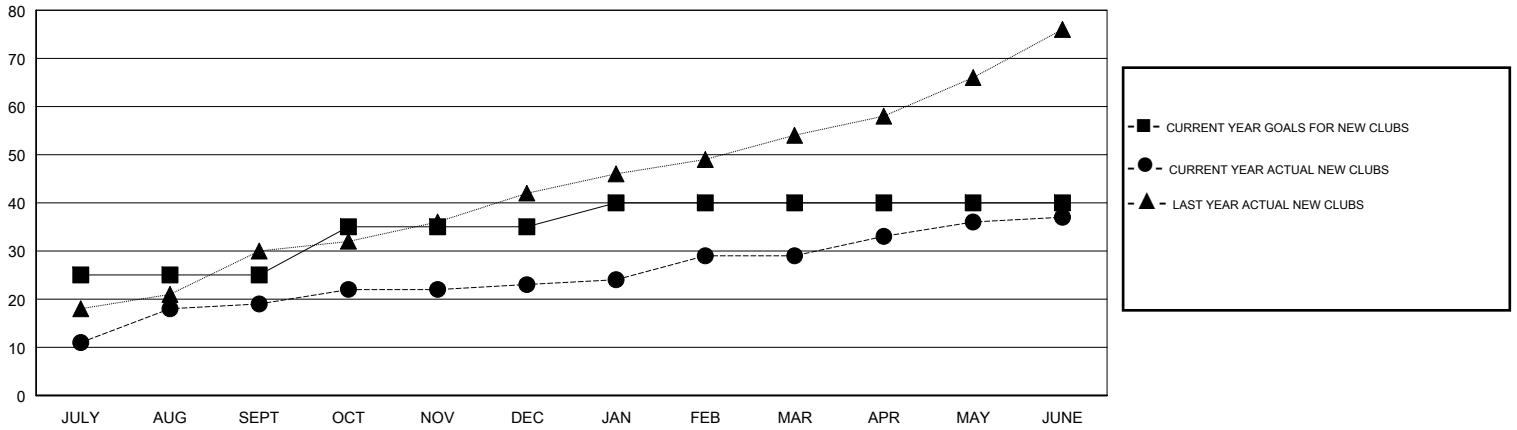
LOCATION NEPAL

GMT CA

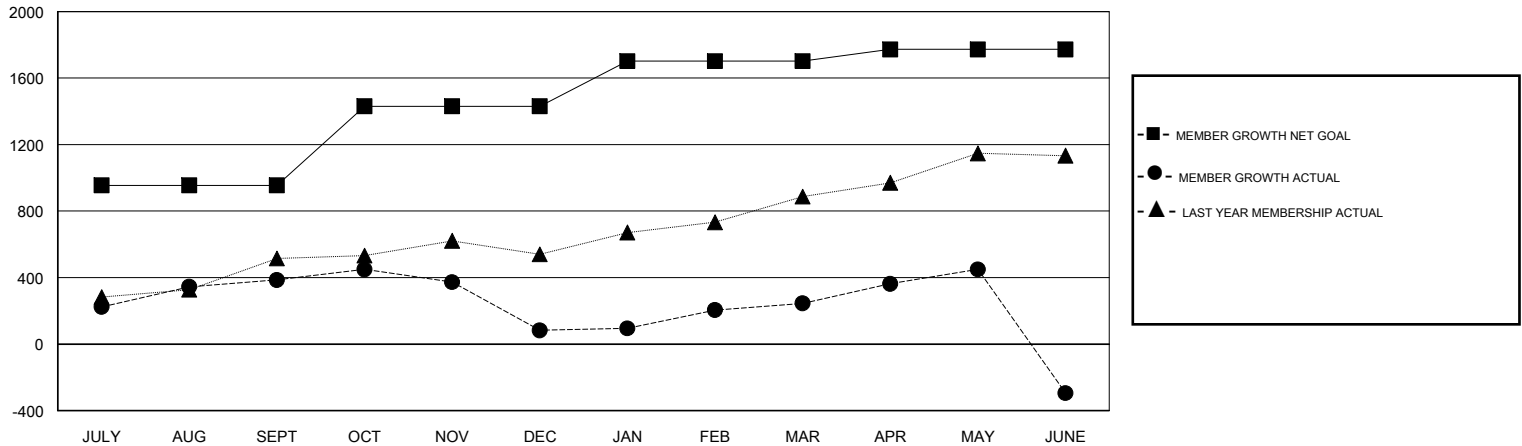
Clubs			
RESULTS FOR 2018-2019			
QUARTER	NEW CLUB GOAL	NEW CLUBS	DROPPED CLUBS
JULY/AUG/SEPT	25	19	2
OCT/NOV/DEC	10	4	12
JAN/FEB/MAR	5	6	0
APR/MAY/JUNE	0	8	22

Members			
RESULTS FOR 2018-2019			
QUARTER	MEMBER GROWTH NET GOAL	MEMBER GROWTH ACTUAL	DROPPED MEMBERS ACTUAL (including transfers)
JULY/AUG/SEPT	955	636	241
OCT/NOV/DEC	475	221	521
JAN/FEB/MAR	272	323	141
APR/MAY/JUNE	70	354	873

GOALS AND ACTUAL NEW CLUBS CUMULATIVE



GOALS AND ACTUAL MEMBERS CUMULATIVE



DROPPED CLUBS: 36	196 CLUBS OF 395 ADDED 1 OR MORE NEW MEMBERS	<u>GENDER DISTRIBUTION</u>
		MALE 6,631 (74.51%)
		FEMALE 2,268 (25.49%)
		Women Percentage Fiscal Year Goal: 19%
<u>DROPPED MEMBERS</u>	<a href="#">CLICK HERE FOR CUMULATIVE MEMBERSHIP DATA</a>	TOTAL FAMILY UNIT MEMBERS 4,657
DECEASED 8		FAMILY MEMBERS PAYING HALF DUES 2,729
CLUB CANCELLED 611		
OTHER 1,157		
TOTAL 1,776		